

NOTES:

1. SPECIFICATIONS:

ELECTRICAL:
 WITHSTANDING VOLTAGE: MINIMUM 1250 V RMS @ SEA LEVEL
 INSULATION RESISTANCE: INITIAL 5000 MEGOHMS MAXIMUM,
 1000 MEGOHMS MIN. AFTER ENVIRONMENTAL TESTING.
 CONTACT RATING: 5 AMPS
 CONTACT RESISTANCE: 2.7 MILLIOHMS MAX.

MATERIALS:
 INSULATOR: WHITE UL94V-0 RATED GLASS FILLED POLYESTER
 CONTACT: COPPER ALLOY
 CONTACT AREA PLATING: GOLD OVER NICKEL,
 CONNECTOR SHELL: STEEL, PLATING ZINC WITH CLEAR CHROMATE.

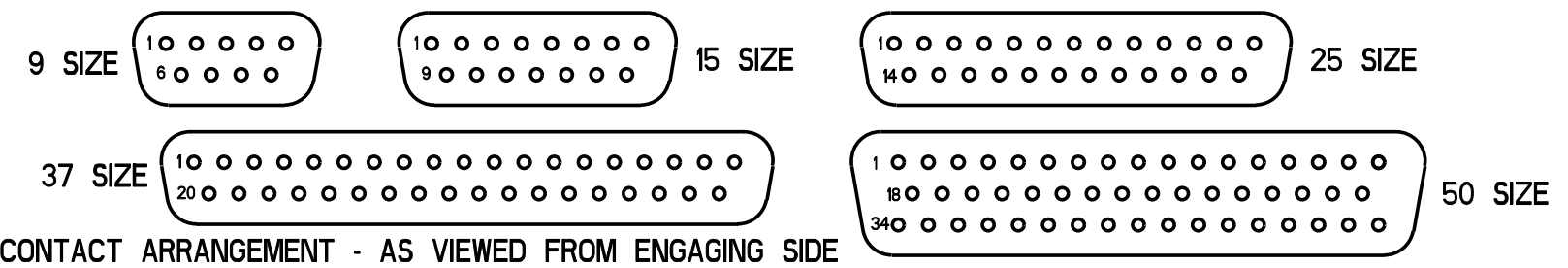
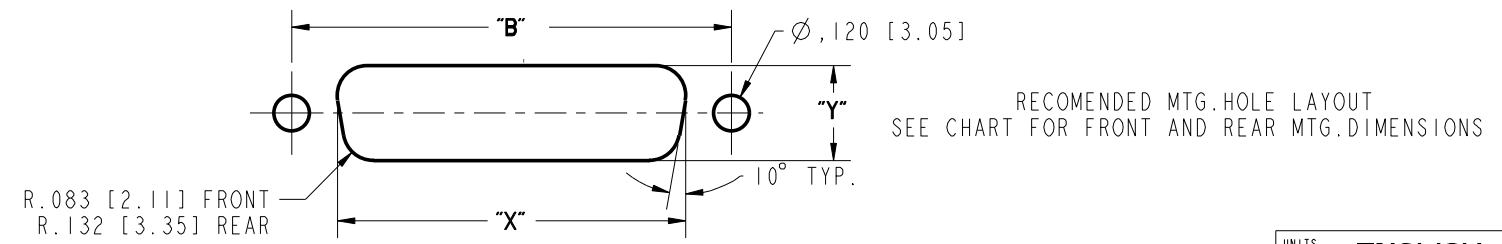
ENVIRONMENTAL:
 OPERATING TEMPERATURE: -65°C TO +125°C

TERMINATION:
 SOLDER POTS ACCOMODATE # 20 AWG STRANDED WIRE MAX.

2. DIMENSIONS IN [] ARE IN MILLIMETERS.

DRAWING REVISIONS			
REV	DOCUMENT	APP	DATE
A	DO 05-1094	AKB	12-08-05
B	ECN 06E420		

NUMBER OF POSITIONS	SELECTIVE GOLD FLASH PLATING (.120" [3.05] MTG. HOLES)		DIMENSION										FRONT MOUNTING HOLE DIMENSIONS		REAR MOUNTING HOLE DIMENSIONS	
	PART NO.	FACTORY NO.	"A"	"B"	"C"	"D"	"E"	"F"	"G"	"H"	"J"	"X"	"Y"	"X"	"Y"	
9	DEH-9P	702 01 09 001	1.213 [30.81]	.984 [24.99]	.697 [17.70]	.360 [9.14]	.494 [12.55]	.759 [19.28]	.422 [10.72]	.045 [1.14]	.030 [0.76]	.874 [22.20]	.513 [13.03]	.806 [20.47]	.449 [11.40]	
15	DAH-15P	702 01 15 001	1.541 [39.14]	1.312 [33.32]	1.025 [26.03]			1.083 [27.51]				1.202 [30.53]		1.134 [28.80]		
25	DBH-25P	702 01 25 001	2.088 [53.04]	1.852 [47.04]	1.583 [40.21]	.378 [9.60]	.605 [15.37]	1.629 [41.38]	.534 [13.56]	.060 [1.52]	.039 [0.99]	1.743 [44.27]	.623 [15.82]	1.674 [42.52]	.555 [14.10]	
37	DCH-37P	702 01 37 001	2.729 [69.32]	2.500 [64.50]	2.231 [56.67]			2.272 [57.71]				2.391 [60.73]		2.326 [59.08]		
50	DDH-50P	702 01 50 001	2.635 [66.93]	2.406 [61.11]	2.127 [54.02]	.484 [12.29]	.605 [15.37]	2.178 [55.32]	.534 [13.56]	.060 [1.52]	.039 [0.99]	2.297 [58.34]	.623 [15.82]	2.218 [56.34]	.555 [14.10]	



ROHS COMPLIANT

UNITS	ENGLISH	PRO/E	Cinch		MODELED BY: V. SKUZA
DO NOT SCALE DRAWING	DRAWN BY V. SKUZA	DATE 06/10/05	TITLE D-SUB SOLDER CUP CONNECTOR PLUG ASS'Y(.120" MTG HOLES)		1700 FINLEY RD LOMBARD, IL. 60148
	DESIGN ENGINEER A. BALI	06/10/05	MATERIAL		CONTROL SPEC NUMBER
	DESIGN ENGINEERING MGR. A. SHAH	07/09/05	MATERIAL SPEC NUMBER	FINISH	PROJECT NUMBER C14716
	MFG. ENGINEERING J. OCEGUERA	07/07/05	CAD FILE NUMBER DXH-XXP	DRAWING NUMBER D*H-XXP	
	QUALITY ASSURANCE A. VAZQUEZ	07/06/05	CAGE IDENT NO. SIZE 71785 B	SCALE 1:1	SHEET 1 OF 1

THIS DOCUMENT IS THE PROPERTY OF CINCH. NEITHER THIS DOCUMENT NOR ANY OF THE INFORMATION CONTAINED IN IT MAY BE DUPLICATED OR DISCLOSED WITHOUT PRIOR WRITTEN CONSENT OF CINCH.