

3D Slide Switches

Japan

Type: **ESE157**

Multiple features activated by one-touch operation



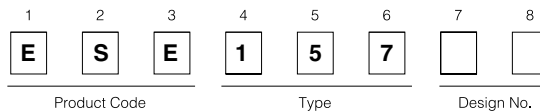
■ Features

- This is a multi-functional switch that combines a self-returning switch and push-on switch.
- This switch realizes high-density mountability for devices.
- Easy operation by thumb is available for various types of portable equipment.

■ Recommended Applications

- Mobile Communications Equipment
(menu-scroll and enter functions)
- Portable Visual Equipment
(volume and tone control for remote control)

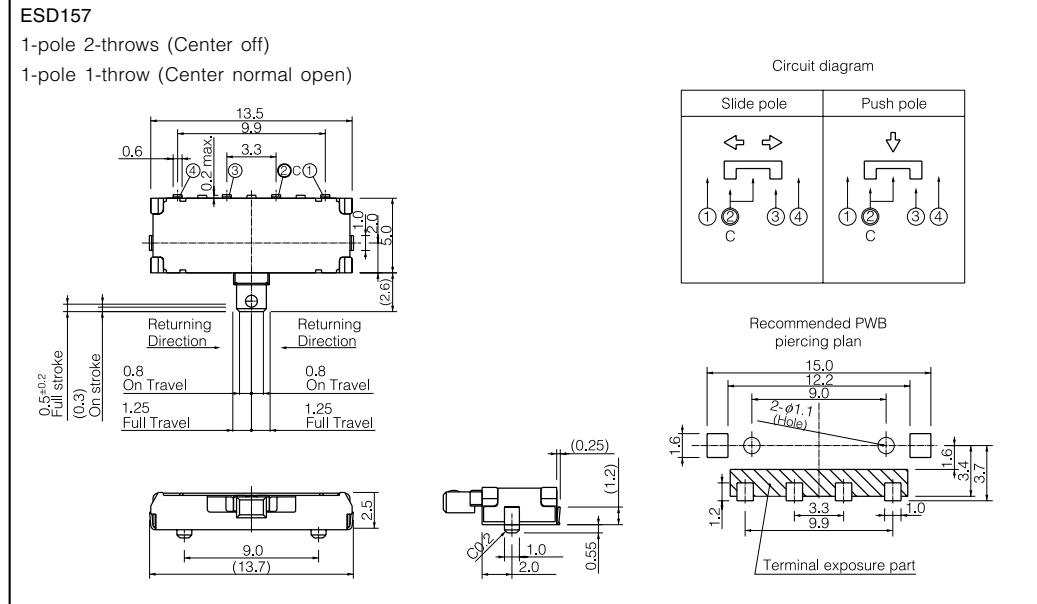
■ Explanation of Part Numbers



■ Major Specifications

Electrical	Power Rating		50 μ A 3 Vdc to 1 mA 10 Vdc
	Contact Resistance		1 Ω max.
	Insulation Resistance		100 Vdc 100 M Ω min.
	Dielectric With Standing Voltage		1 minute at 100 Vac
	Bouncing		10 ms max.
Mechanical	Circuit Diagram	Slide Mode	1-pole 2-throws (Center off)
		Push Mode	1-pole 1-throw (Center normal open)
	Travel	Slide Mode	1.25 mm
		Push Mode	0.5 mm
	Operating Force	Slide Mode	0.8 N \pm 0.4 N
		Push Mode	1.6 N \pm 0.8 N
Minimum Quantity/Packing Unit			1400 pcs. (Reel Pack)
Quantity/Carton			2800 pcs.

■ Dimensions in mm (not to scale)



■ Packaging Specifications

Standard Reel Dimensions in mm (not to scale)

