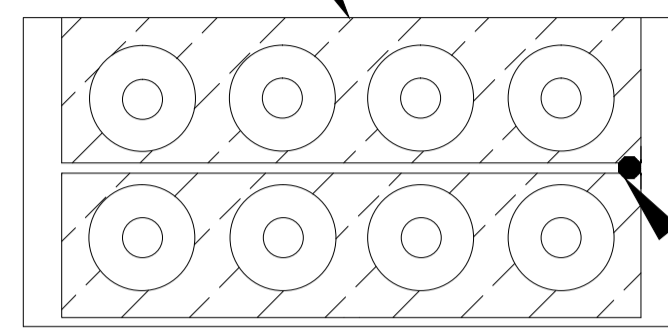


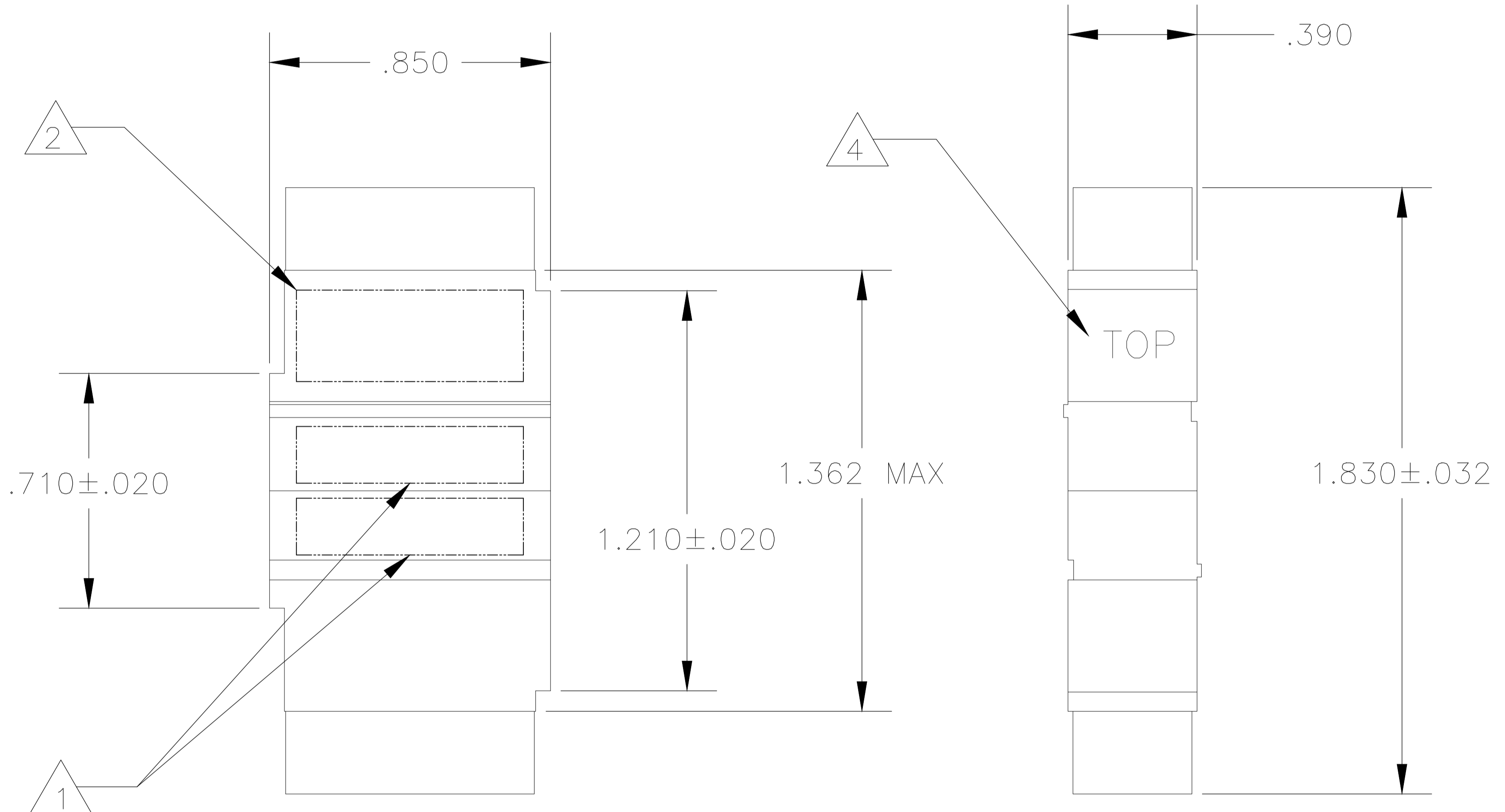
DESCRIPTION	MATERIAL	FINISH
MODULE ASSEMBLY	EPOXY THERMOSET	COLOR: BLACK
GROMMET	FLOURSILICONE 40/50 PER MIL-R-25988	COLOR: NATURAL
CONTACT SOCKET	BERYLLIUM COPPER PER ASTM-B194	GOLD PLATE PER MIL-G-45204
RETAINING CLIP	BERYLLIUM COPPER PER ASTM-B194 OR STAINLESS STEEL PER QQ-S-766	NONE

LOC	DIST	REVISIONS					
DF	AO	P	LTR	DESCRIPTION	DATE	DWN	APVD
		C		ECO-14-013776	10NOV14	MGM	CT

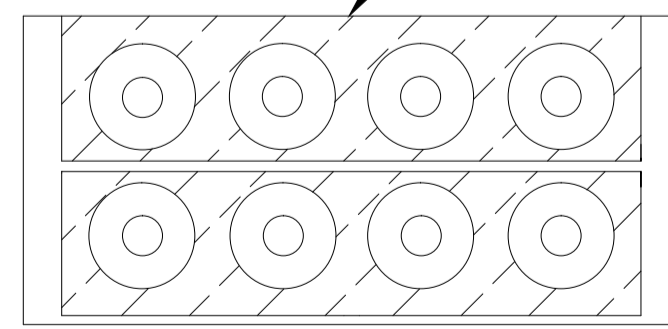
TOP BUSSING ARRANGEMENT



INDEXING INDICATOR



BOTTOM BUSSING ARRANGEMENT



- 1 MARK MODULE ASSEMBLY WITH "AMP", AMP PART NO. AND DATE CODE ON EITHER SIDE.
- 2 MARK MODULE ASSEMBLY WITH CUSTOMER PART NO. 12093B16E13-204 ON EITHER SIDE.
- 3. ROLLS ROYCE QUALITY SPECIFICATION CQC-103 IS INVOKED FOR THIS PART NO.
- 4 MARK WORD "TOP" AT LOCATION SHOWN.

592847-1
PART NO.

THIS DRAWING IS A CONTROLLED DOCUMENT.		DIN N. FRITZ 09-20-93	TE Connectivity	
DIMENSIONS: INCHES		CHK R. RYAN 09-21-93		
TOLERANCES UNLESS OTHERWISE SPECIFIED:		APP'D R. RYAN 09-21-93	NAME: MODULE, FEED BACK SIZE 16 ASSEMBLY TJ	
0. PLC ± .005	1. PLC ± .005	PRODUCT SPEC	APPLICATION SPEC	
2. PLC ± .005	3. PLC ± .005	SIZE	A1	
4. PLC ± .005	ANGLES ± .005	WEIGHT	C=592847	
MATERIAL	FINISH	CUSTOMER DRAWING	SCALE 2:1	SHEET 1 OF 1